

# **GC-R8 Controller Wireless Modules User's Manual**

# Table of Contents

<b>WI-FI MODULE AND ANTENNA.....</b>	<b>3</b>
WI-FI MODULE AND ANTENNA PACKAGE CONTENTS .....	3
INSTALLING THE WI-FI MODULE AND ANTENNA .....	4
CONFIGURING WI-FI SETTINGS .....	7
DISABLING THE BLUETOOTH FUNCTION .....	9
<b>4G MODULE AND ANTENNA.....</b>	<b>11</b>
4G MODULE AND ANTENNA PACKAGE CONTENTS.....	11
INSTALLING THE 4G MODULE AND ANTENNA .....	12
<b>5G MODULE AND ANTENNA.....</b>	<b>15</b>
5G MODULE AND ANTENNA PACKAGE CONTENTS.....	15
INSTALLING THE 5G MODULE AND ANTENNA .....	16

# Wi-Fi Module and Antenna

## Wi-Fi Module and Antenna Package Contents



Antenna x 2



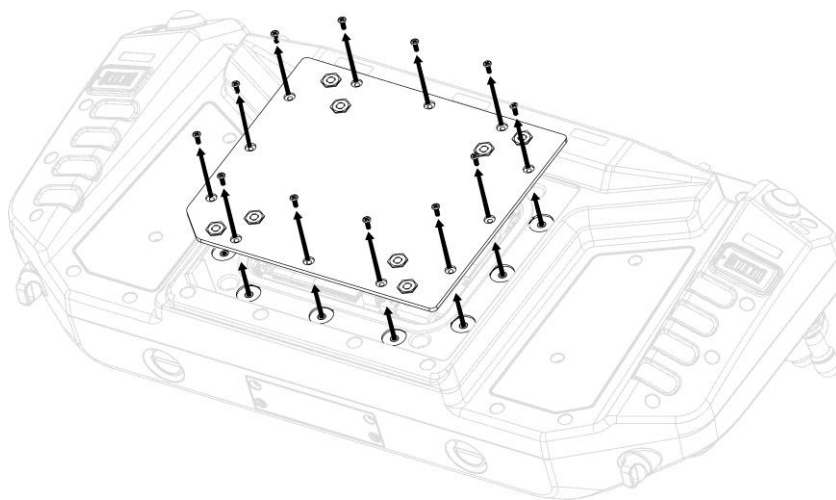
Wi-Fi Module x 1

# Installing the Wi-Fi Module and Antenna

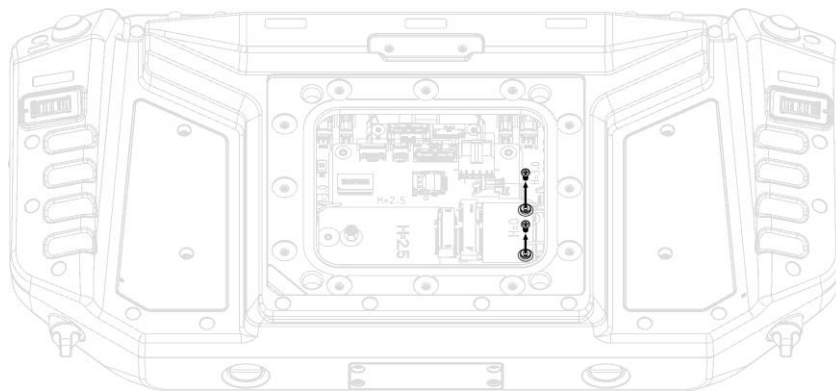
Before enabling the Wi-Fi function, make sure to install the “GC-R8 WIFI driver” in the R8 tablet from the Downloads section on the DURABOOK website.

To install the Wi-Fi module and antenna, follow the steps below:

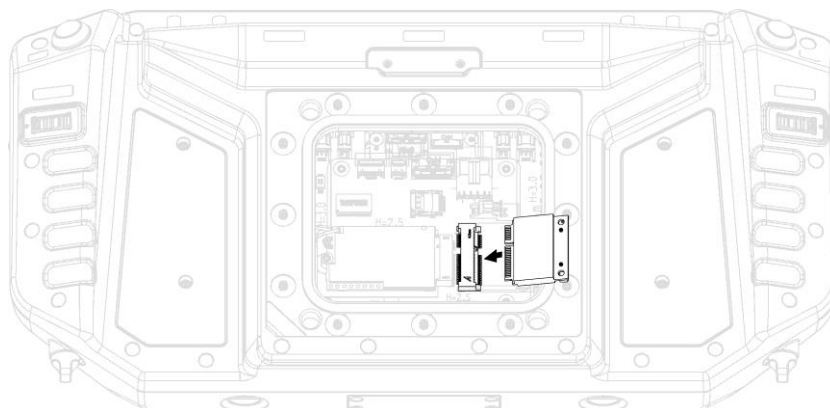
1. Remove the screws securing the back cover.



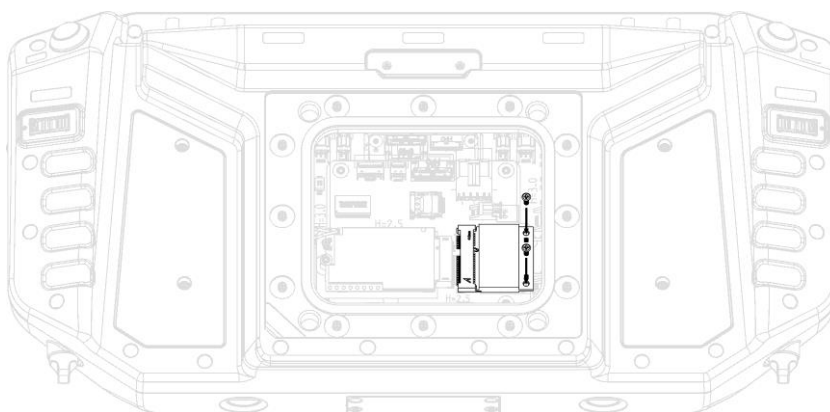
2. Remove the existing screws on the board.



3. Connect the Wi-Fi module to the board connector, as shown in the illustration below.



4. Install the screws to secure the Wi-Fi module in place.

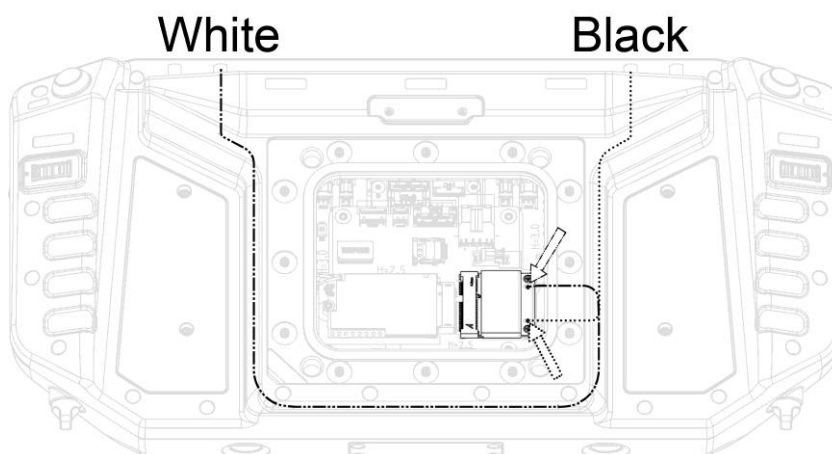


5. Connect the WLAN antenna cables to the Wi-Fi module connectors.



### NOTE

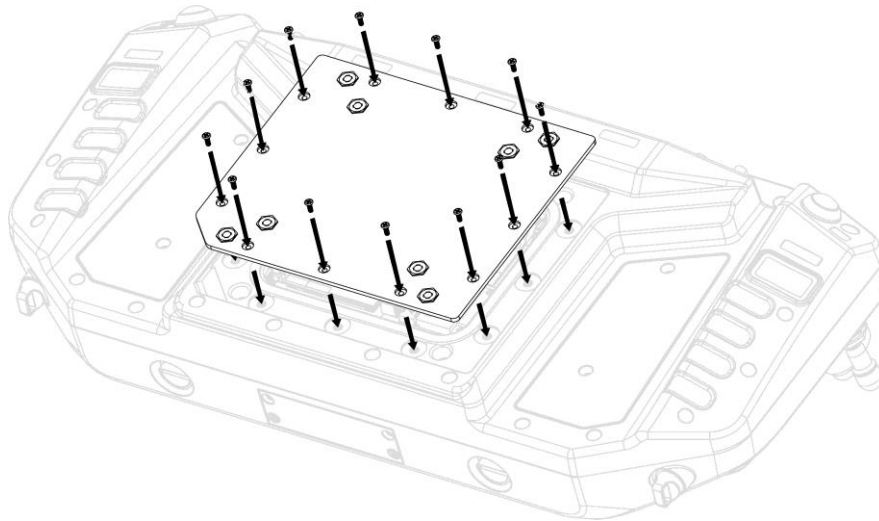
- Make sure the color-coded cable is securely connected to its corresponding connector, as shown below.



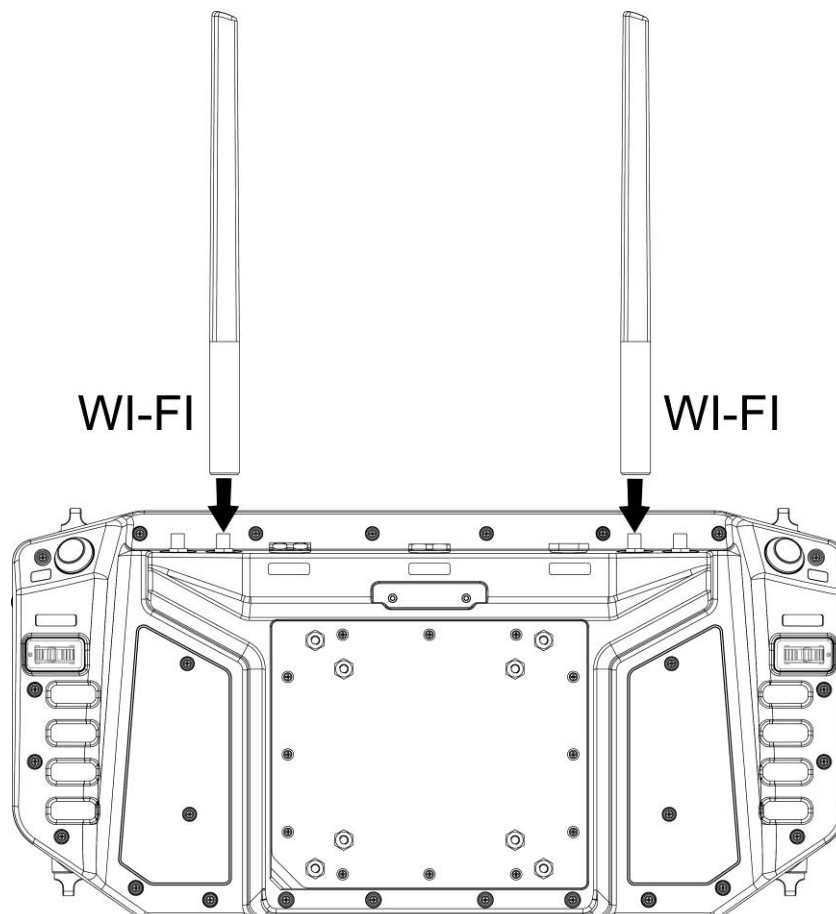
## Making Connections

---

6. After confirming the cables are securely connected, install the screws to secure the back cover in place.



7. Connect the Wi-Fi external antennas to their respective RF Pass-thru connectors, as shown in the illustration below.



# Configuring Wi-Fi Settings

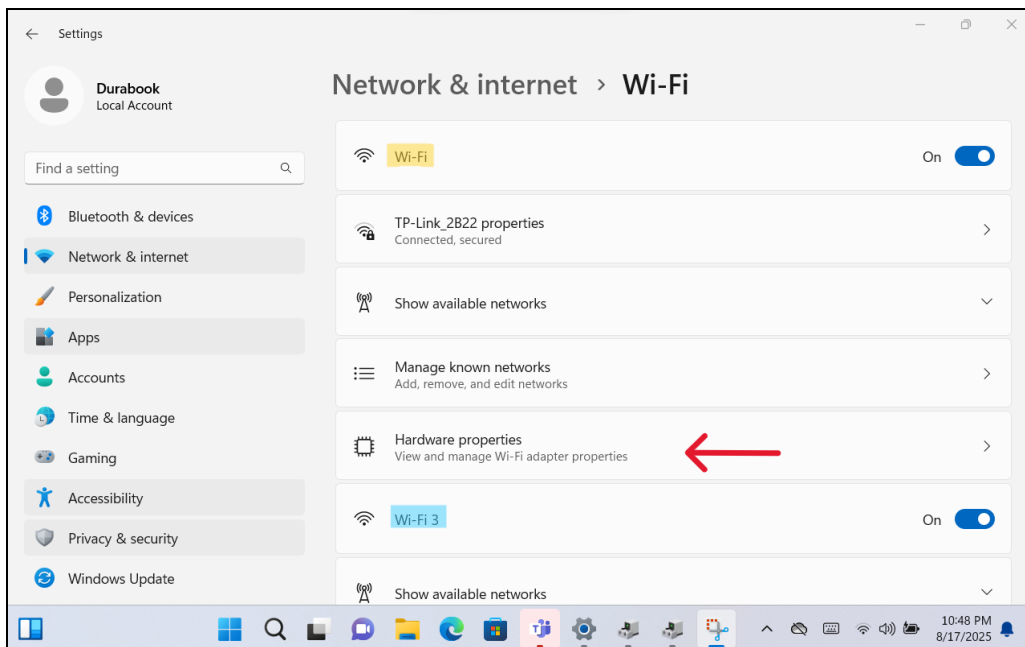
To configure the Wi-Fi settings for your R8 tablet and controller, follow the steps below:

1. On your R8 tablet, select **Start**  > **Settings**  > **Network and internet**. Then enable the **Wi-Fi** and **Wi-Fi 3** functions.



## NOTE

- The number 3 is a randomly assigned sequence number.
2. Select **Hardware properties** to view and manage Wi-Fi adapter properties.



## Making Connections

- a. For the R8 Wi-Fi module, under **Wi-Fi properties**, the description should show "Intel® Wi-Fi 6E AX211 160MHz".

Network & internet > Wi-Fi > Wi-Fi

Wi-Fi properties ^

IP assignment:	Automatic (DHCP)	Edit
DNS server assignment:	Automatic (DHCP)	Edit
SSID:	TP-Link_2B22	Copy
Protocol:	Wi-Fi 6 (802.11ax)	
Security type:	WPA2-Personal	
Manufacturer:	Intel Corporation	
Description:	Intel(R) Wi-Fi 6E AX211 160MHz	
Driver version:	22.170.0.3	
Network band:	5 GHz	
Network channel:	40	
Link speed (Receive/Transmit):	576/576 (Mbps)	
Link-local IPv6 address:	fe80::3330:a6b4:b3a7:231a%53	
IPv4 address:	192.168.0.107	

- b. For the controller Wi-Fi module, under **Wi-Fi 3 properties**, the description should show "Realtek 8822CU Wireless LAN 802.11ac".

Network & internet > Wi-Fi > Wi-Fi 3

Wi-Fi 3 properties ^

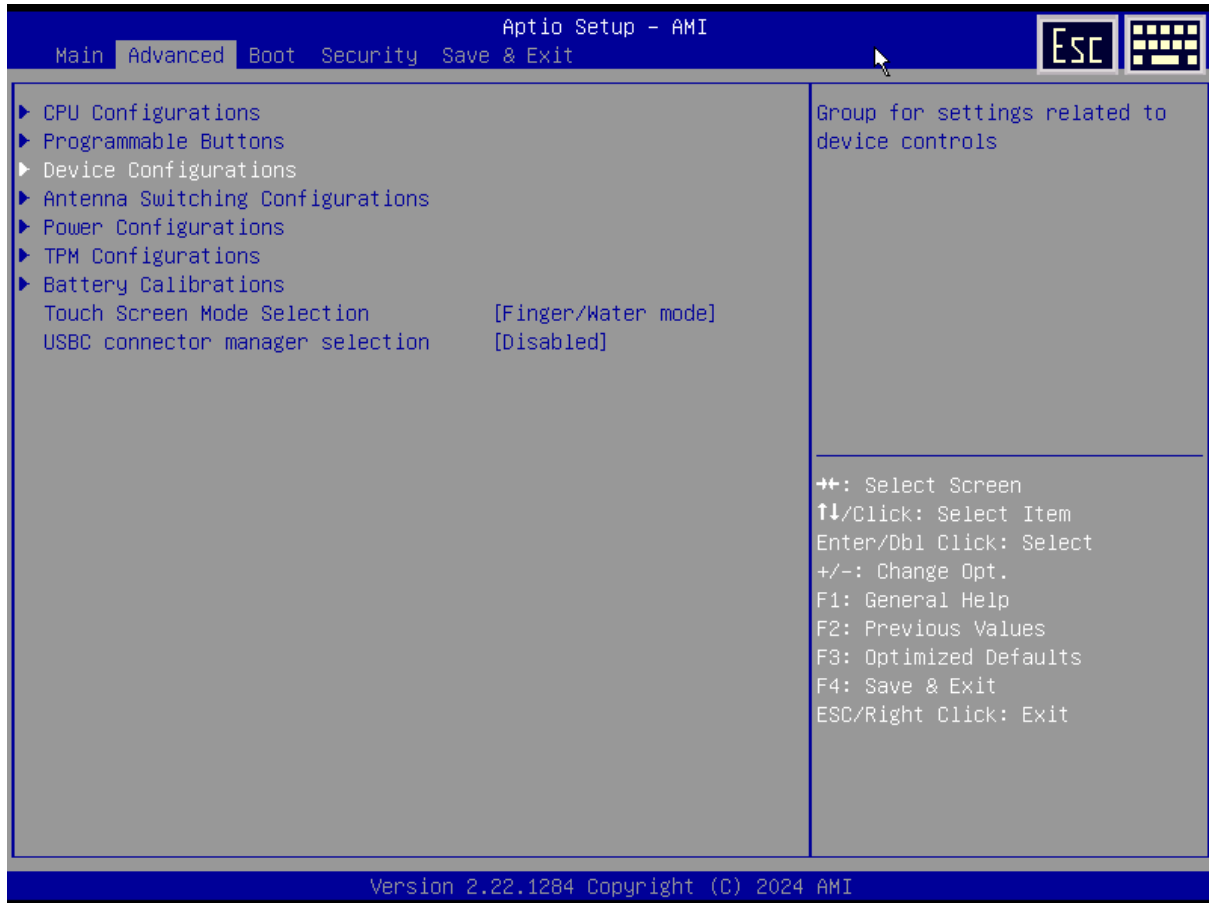
IP assignment:	Automatic (DHCP)	Edit
DNS server assignment:	Automatic (DHCP)	Edit
Manufacturer:	Realtek Semiconductor Corp.	Copy
Description:	Realtek 8822CU Wireless LAN 802.11ac USB NIC	
Driver version:	1030.44.1014.2024	
Physical address (MAC):	00-0E-8E-CE-47-E3	

More adapter options Edit



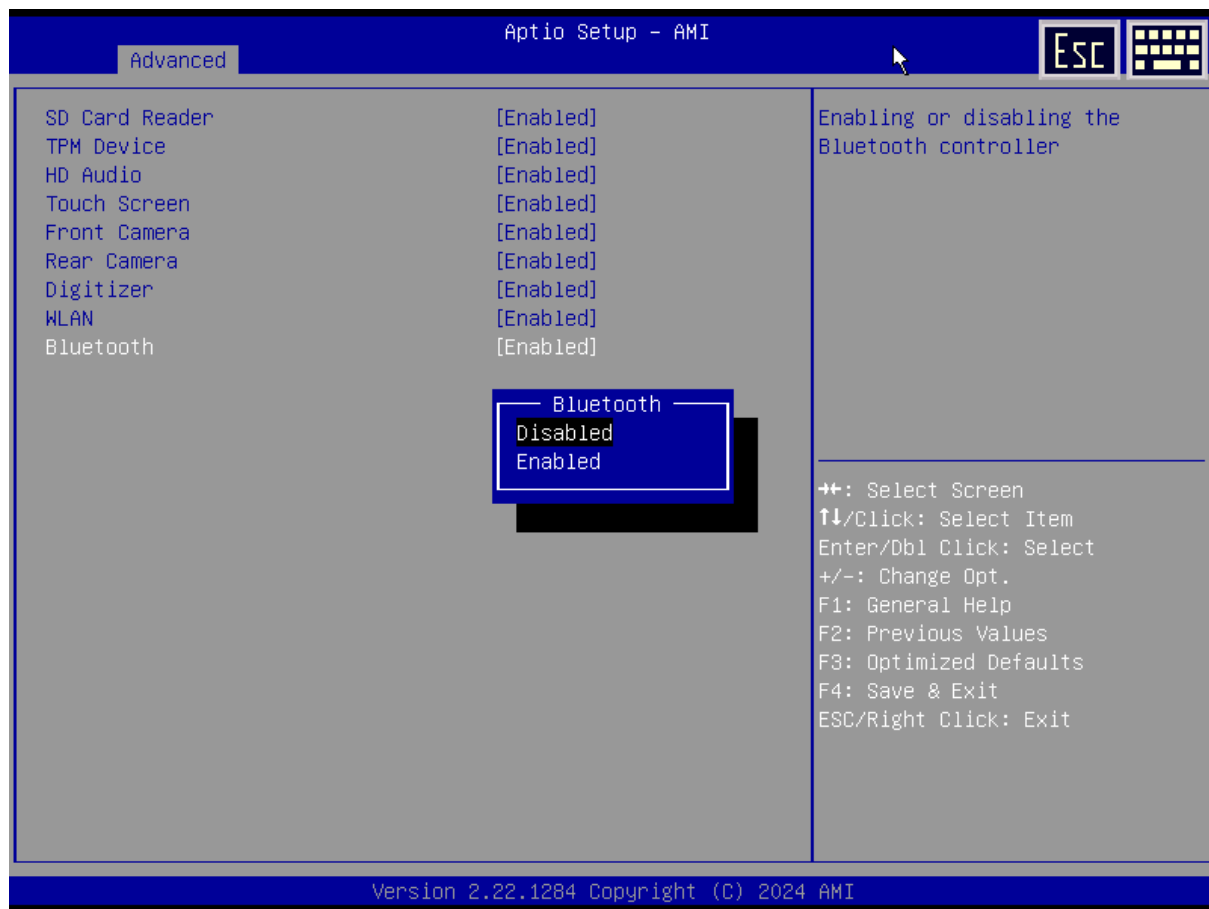
# Disabling the Bluetooth Function

1. Enter the R8 BIOS Setup menu. Then select **Advanced** > **Device Configurations**.



## Making Connections

- For the **Bluetooth** option, select "Disabled". This will turn off the R8 tablet's Bluetooth to avoid interfering with the controller's Bluetooth signal.



# 4G Module and Antenna

## 4G Module and Antenna Package Contents



Antenna x 2



4G Module x 1

# Installing the 4G Module and Antenna

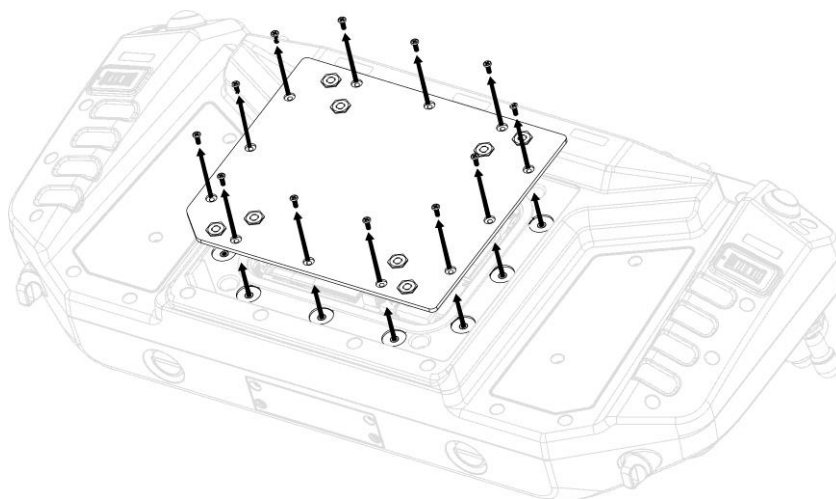
## CAUTION!

***When using the 4G function, it must be used with the DC-IN input to ensure proper operation.***

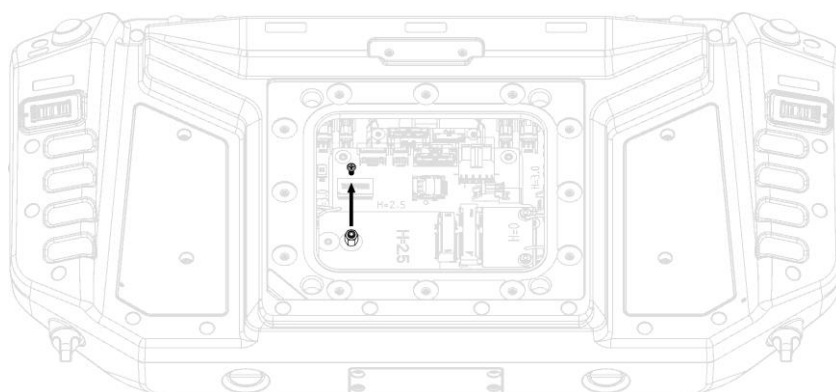
Before enabling the 4G/LTE function, make sure to install the "GC-R8 4G LTE driver" in the R8 tablet from the Downloads section on the DURABOOK website.

To install the 4G module and antenna, follow the steps below:

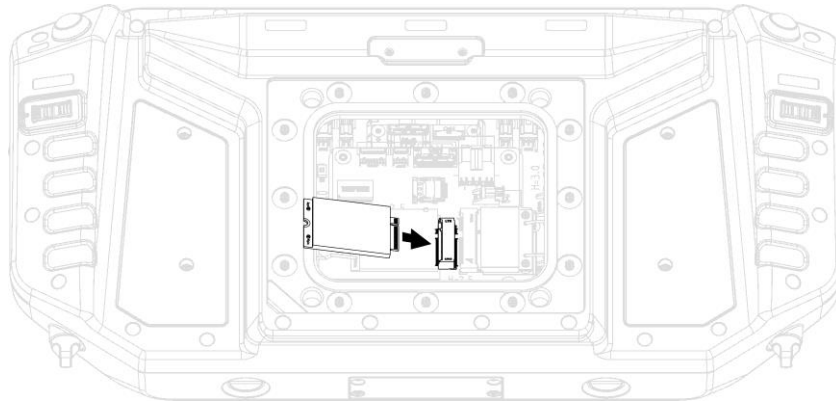
1. Remove the screws securing the back cover.



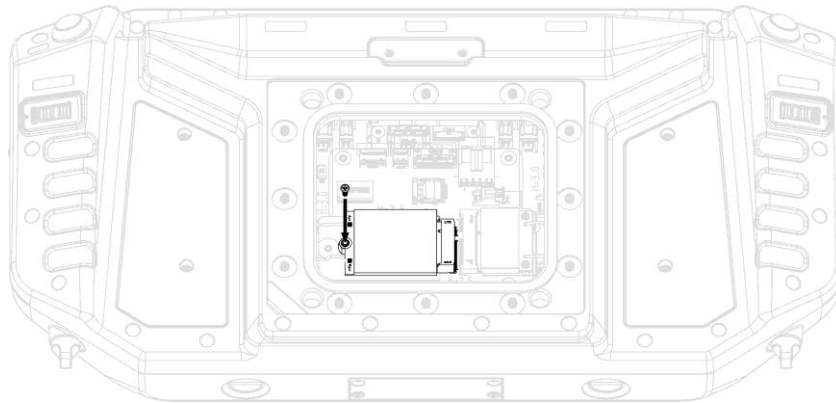
2. Remove the existing screws on the board.



3. Connect the 4G module to the board connector, as shown in the illustration below.



4. Install the screws to secure the 4G module in place.

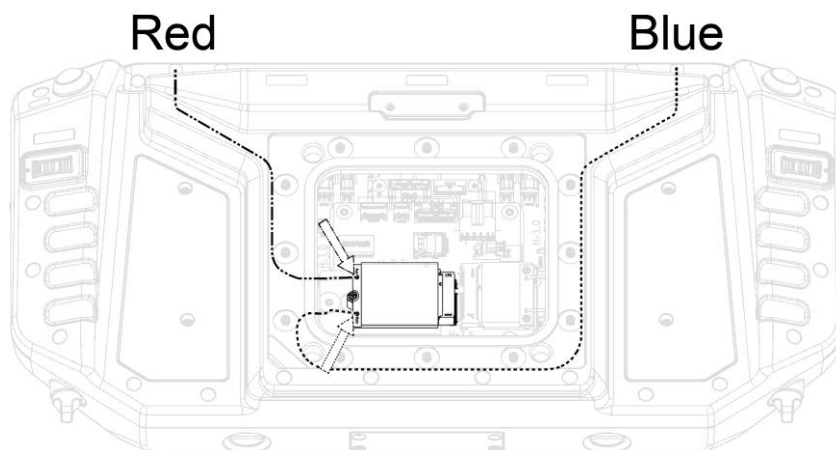


5. Connect the WWAN antenna cables to the 4G module connectors.



**NOTE**

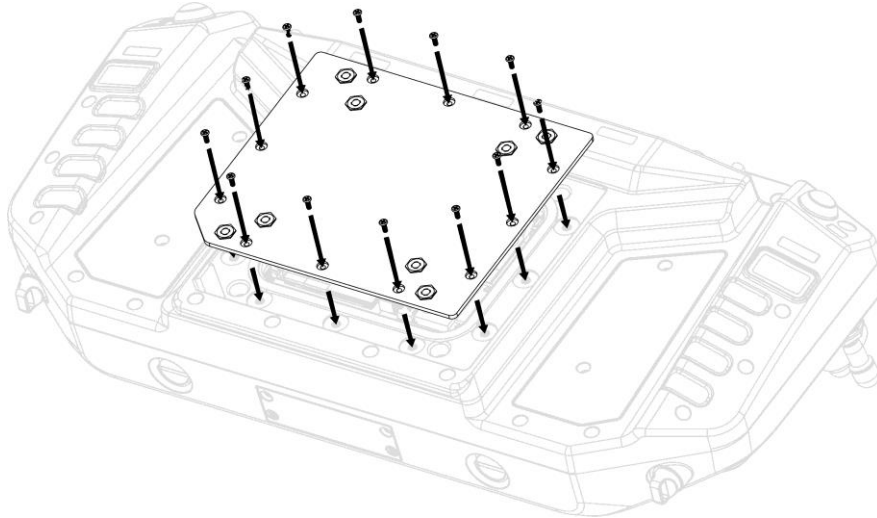
- Make sure the color-coded cable is securely connected to its corresponding connector, as shown below.



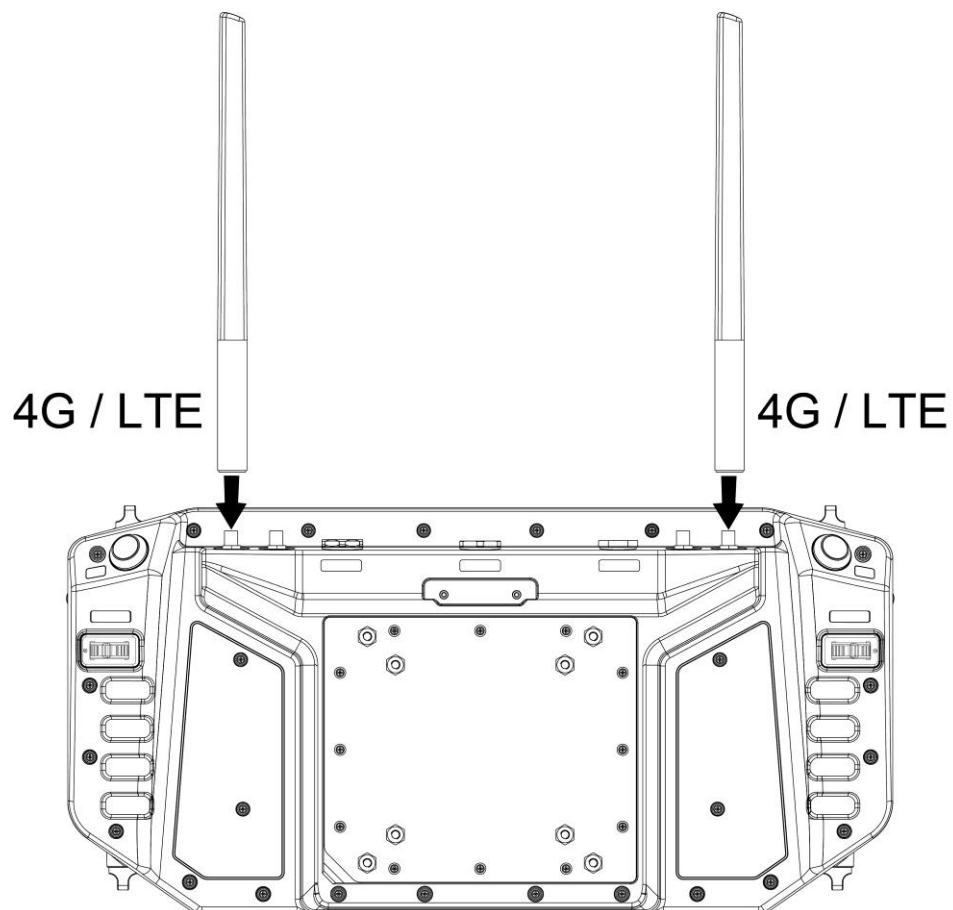
## Making Connections

---

6. After confirming the cables are securely connected, install the screws to secure the back cover in place.



7. Connect the 4G external antennas to their respective RF Pass-thru connectors, as shown in the illustration below.



# 5G Module and Antenna

## 5G Module and Antenna Package Contents



Antenna x 2



5G Module x 1

# Installing the 5G Module and Antenna

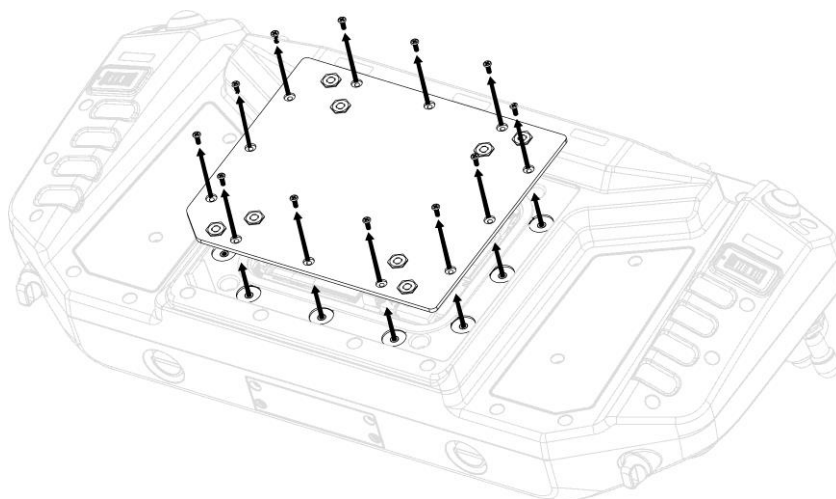
## CAUTION!

***When using the 5G function, it must be used with the DC-IN input to ensure proper operation.***

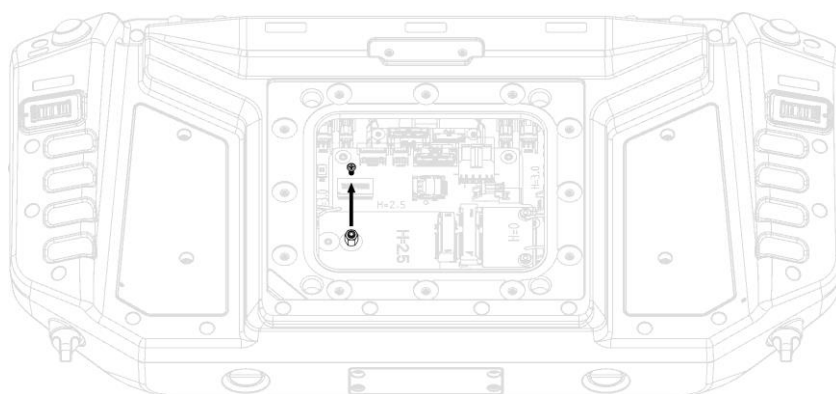
Before enabling the 5G function, make sure to install the “GC-R8 5G driver” in the R8 tablet from the Downloads section on the DURABOOK website.

To install the 5G module and antenna, follow the steps below:

1. Remove the screws securing the back cover.

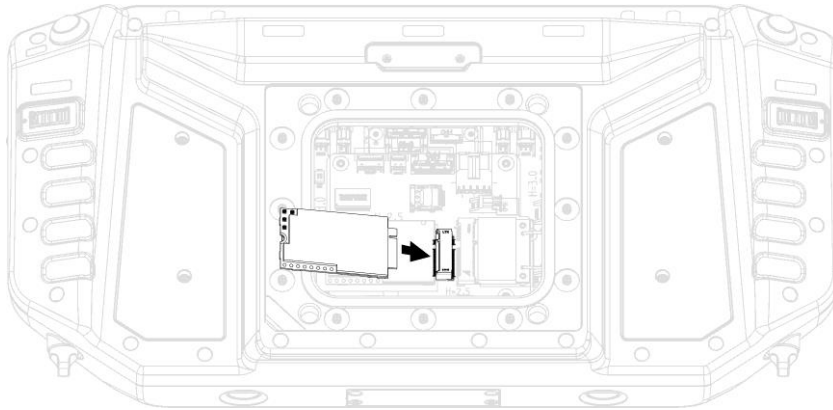


2. Remove the existing screws on the board.

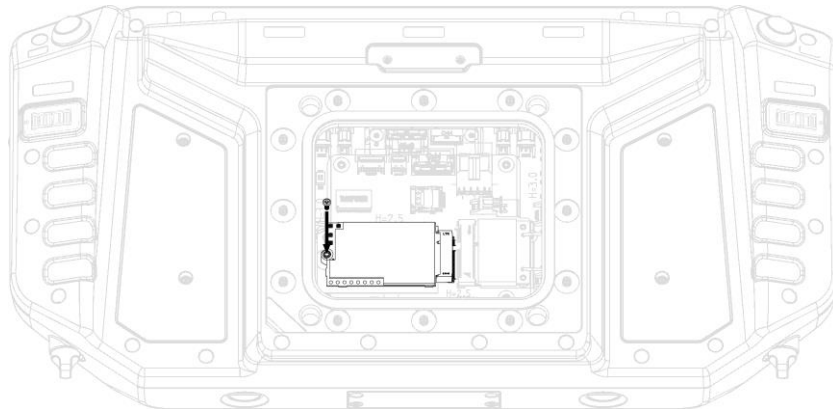




3. Connect the 5G module to the board connector, as shown in the illustration.



4. Install the screws to secure the 5G module in place.

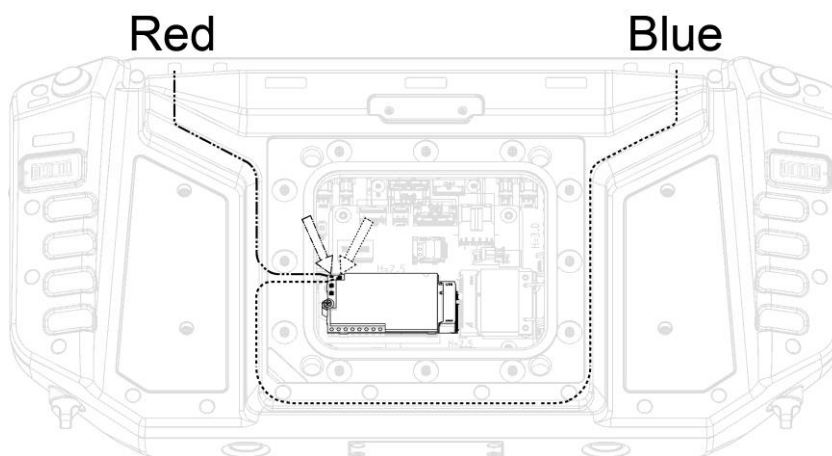


5. Connect the WWAN antenna cables to the 5G module connectors.



**NOTE**

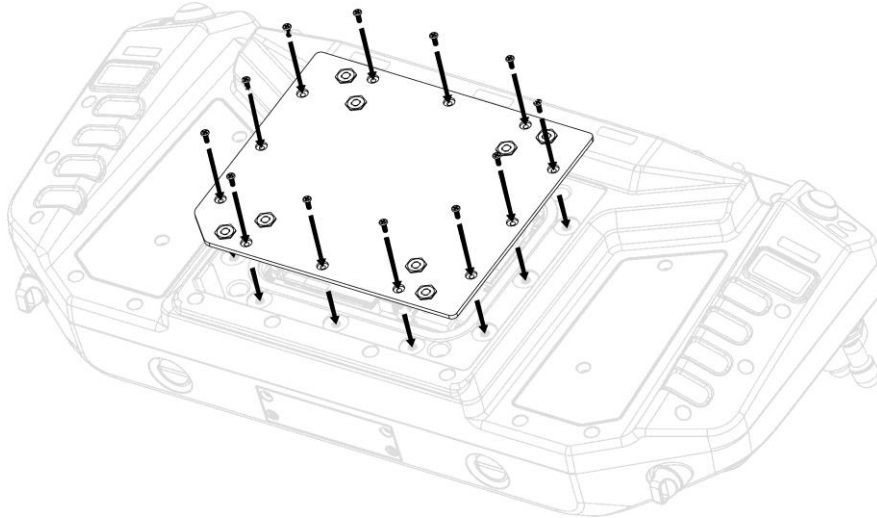
- Make sure the color-coded cable is securely connected to its corresponding connector, as shown below.



## Making Connections

---

6. After confirming the cables are securely connected, install the screws to secure the back cover in place.



7. Connect the 5G external antennas to their respective RF Pass-thru connectors, as shown in the illustration below.

