

R10 Rugged Tablet Expansion Modules UHF RFID

User's Manual



Package Contents

If any of following items are damaged, please contact your retailer.

UHF RFID module





CTO door plate



Screw & O RING
(6+6+6)



UHF RFID Module Screws

Screw Name	Screw Type	Quantity	Torque
M2.6X12L & O RING		6 (module to CTO door plate)	2.0 ± 0.3 Kgf-cm
ISOT-M2.0X4L		6 (CTO door plate to lower case)	2.0 ± 0.3 Kgf-cm



NOTE

The pictures are for reference only. Actual items may slightly differ.

Installation

This section will guide you on how to install the expansion modules to your tablet PC.

Note: Make sure to remove the battery before installing any type of expansion modules. For more information on how to remove/install the battery, please refer to the tablet PC service guide.

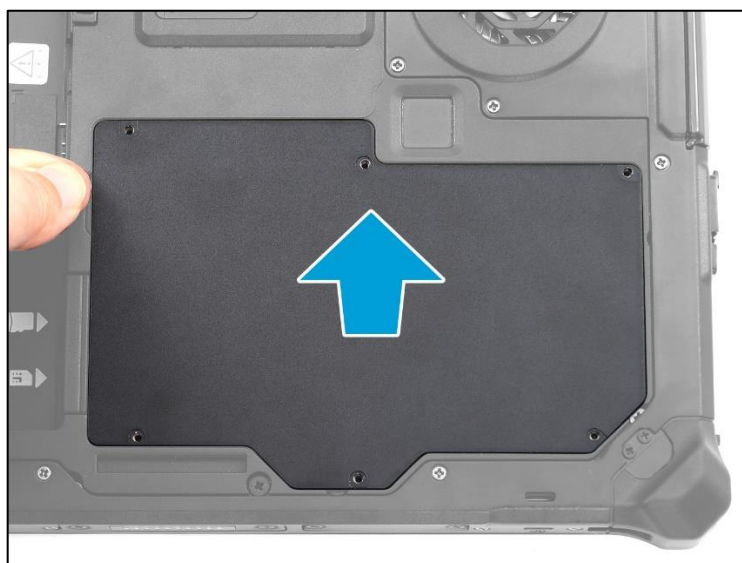
Installing the UHF RFID Module

To install the UHF RFID module, follow the steps below:

1. Remove the 6 screws securing the CTO door to the lower case.



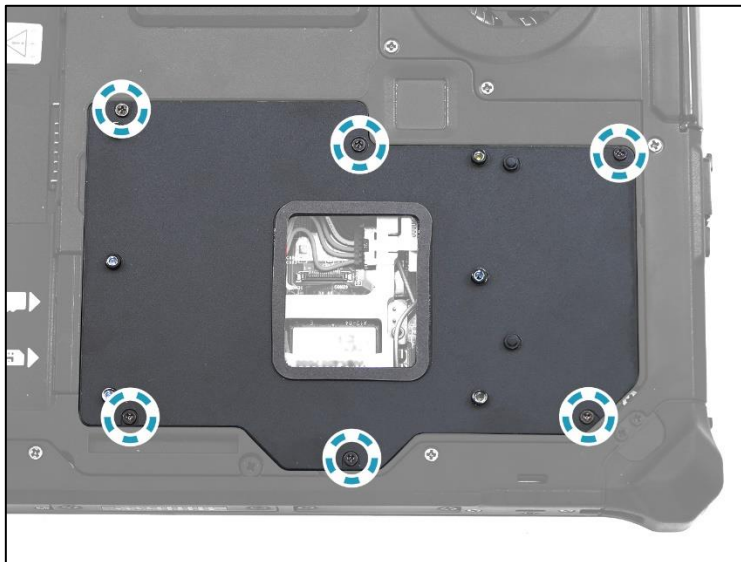
2. Remove the CTO door.



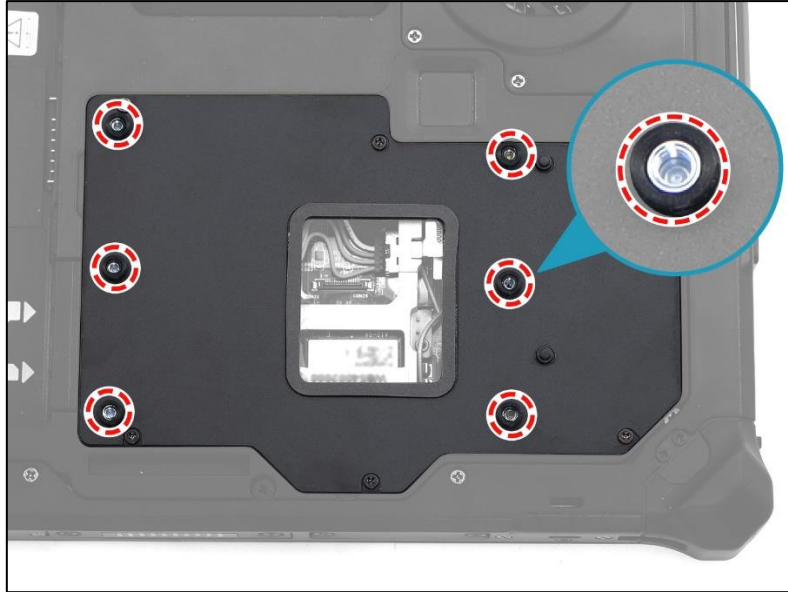
3. Install the CTO door plate onto its compartment on the lower case.



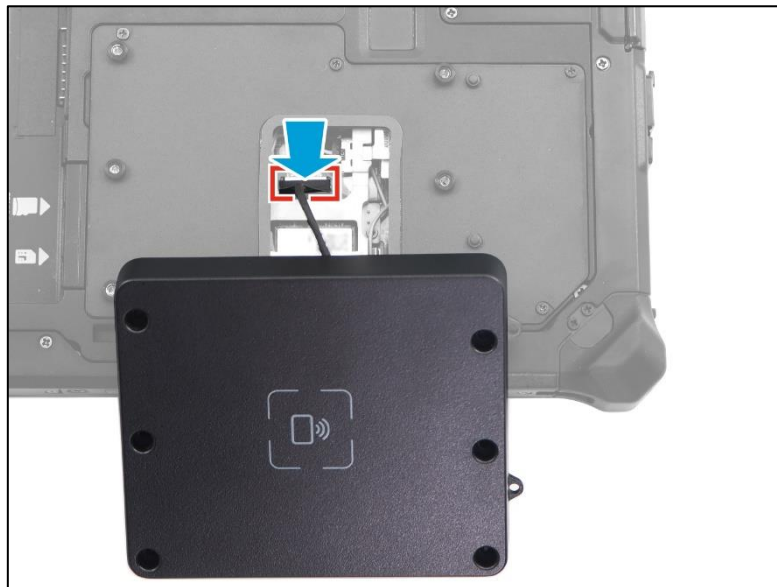
4. Attach the 6 screws to secure the CTO door plate to the lower case.



5. Attach the 6 rubber washers to the screw holes on the CTO door plate.



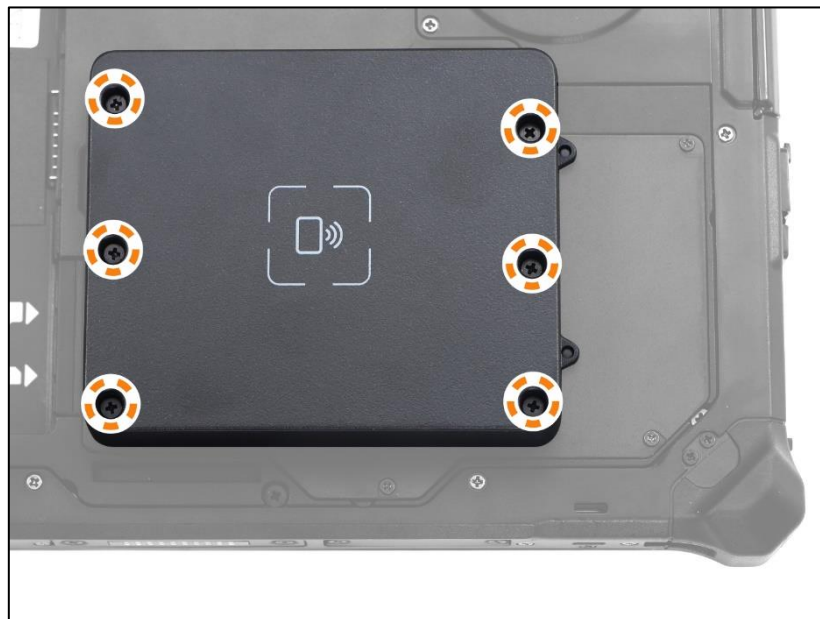
6. Connect the UHF RFID module harness to the mainboard connector.





7. Align the UHF RFID module with the guide pins (marked in green) and the screw holes (marked in red). Then install the UHF RFID module onto its compartment on the CTO door plate.



8. Attach the 6 screws to secure the UHF RFID module to the lower case.



UHF RFID Module Screws

Screw Name	Screw Type	Quantity	Torque
M2.6X12L & O RING		6 (module to CTO door plate)	2.0 ± 0.3 Kgf-cm
ISOT-M2.0X4L		6 (CTO door plate to lower case)	2.0 ± 0.3 Kgf-cm