

U11I Rugged Tablet Expansion Modules 2nd smart card User's Manual



Package Contents

If any of following items is damaged, please contact your retailer.




2ND smart card module



CTO door plate

Screw & O RING
(8+6+2+8)

2ND Smart Card Module Screws

Screw Name	Screw Type	Quantity
ISOT-M2.0X3L		8 (CTO door plate to lower case)
ISOT-M2.6X4L		2 (module to lower case)
M2.6X12L & O RING		6 (module to lower case)



NOTE

The pictures are for reference only, actual items may slightly differ.

Installation

This section will guide you on how to install the expansion modules to your tablet PC.

Note: Make sure to remove the battery before installing any type of expansion modules. For more information on how to remove/install the battery, please refer to the tablet PC service guide.

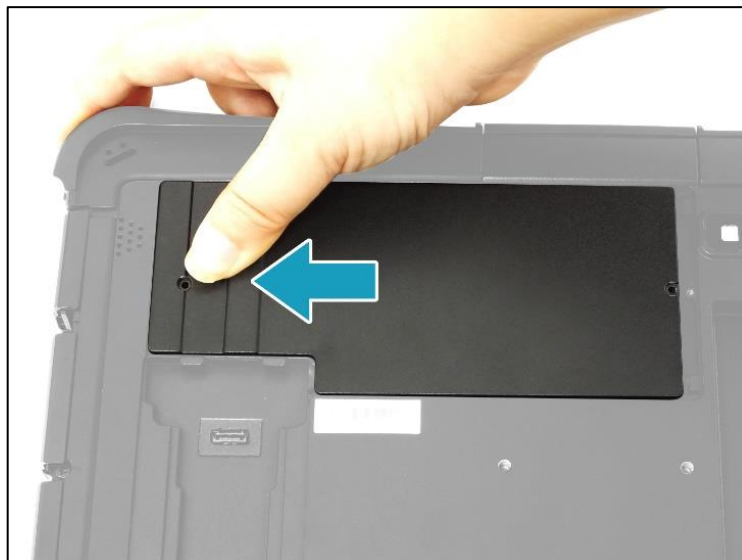
Installing the 2ND Smart Card Module

To install the 2ND smart card module, follow the steps below:

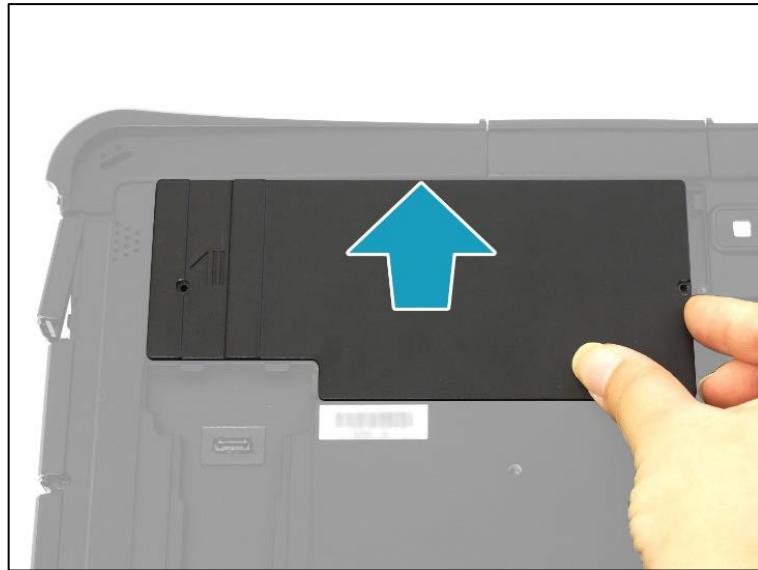
1. Remove the 2 screw securing the CTO door to the lower case.



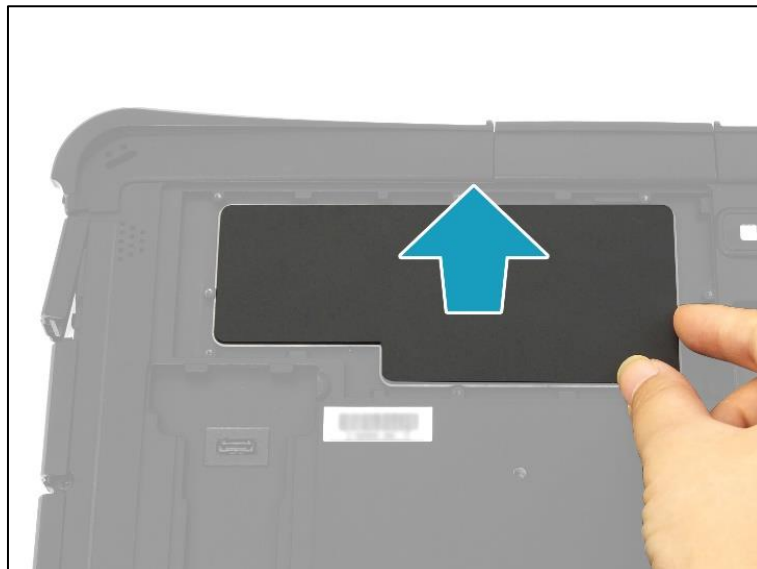
2. Slide the CTO door to the left to disengage it from the tabs.



3. Remove the CTO door.



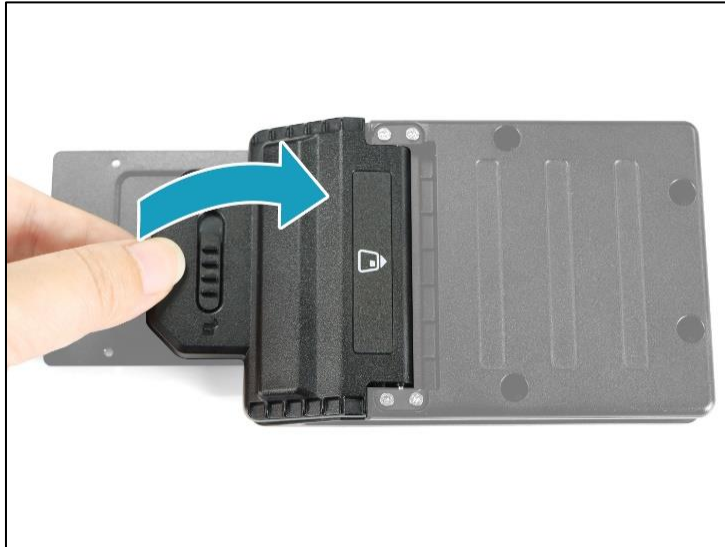
4. Remove the CTO door seal out of its compartment.



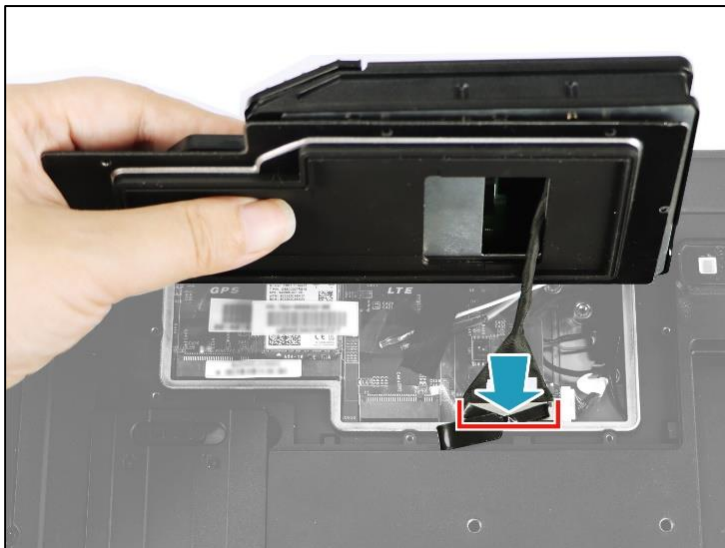
5. Slide the knob to the right to unlock the CTO box door.



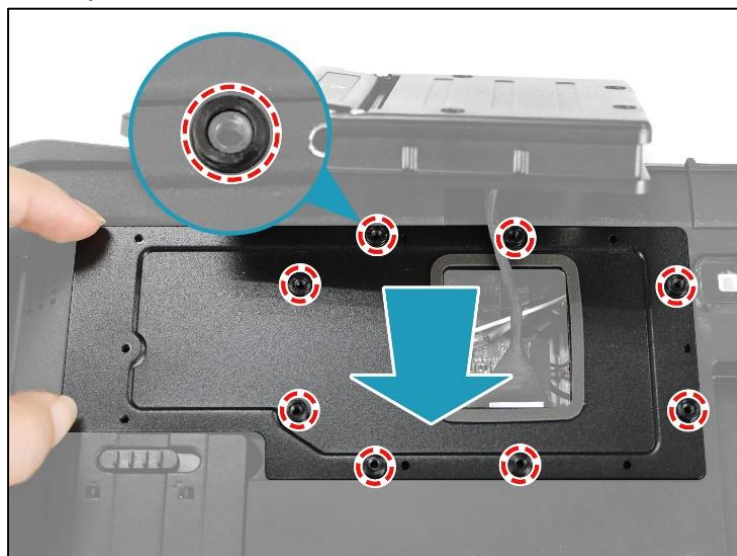
6. Open the CTO box door.



7. Connect the 2ND smart card module harness to the mainboard connector.



8. By aligning with the screw holes, install the CTO door plate onto its compartment on the lower case. Make sure the rubber washers are properly seated into their respective screw holes.



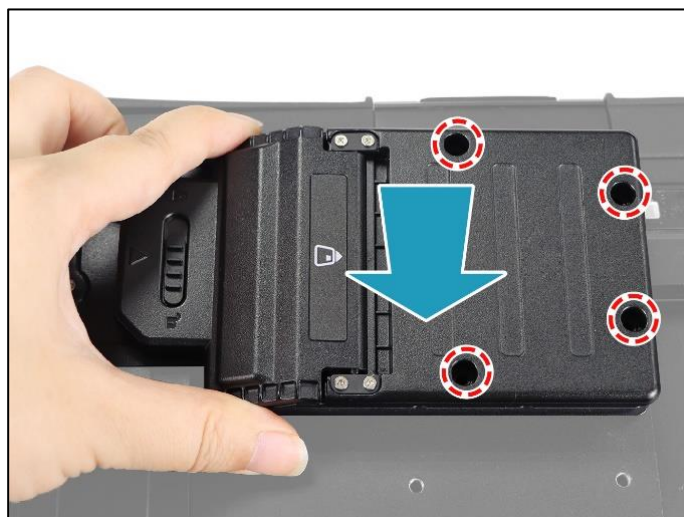
9. Attach the 8 screws to secure the CTO door plate to the lower case.



10. Route the 2ND smart card module harness inside the gap. Ensure that the harness does not float above the surrounding sponge as marked in the illustration below.

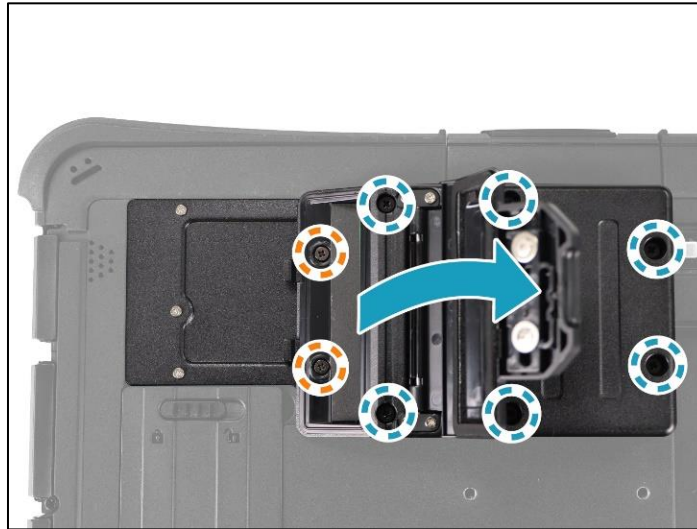


11. By aligning with the screw holes, install the 2ND smart card module onto its slot on the lower case.

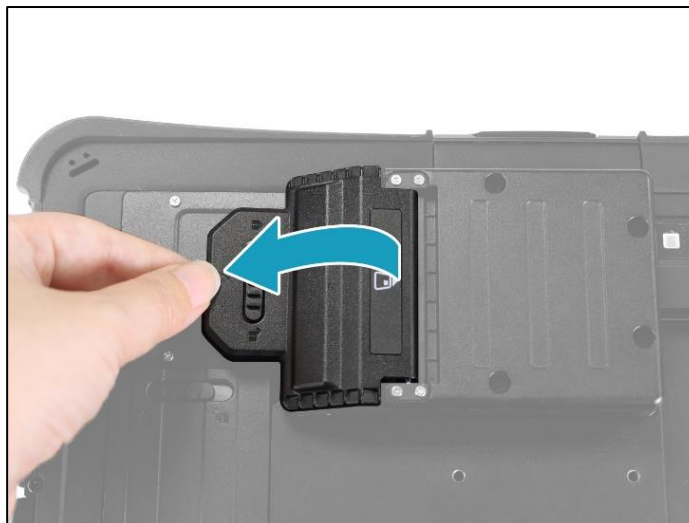


12. Attach the 8 screws to secure the 2ND smart card module to the lower case.

- M2.6X12L & O RING (marked with blue-white circle): 6 screws
- ISOT-M2.6X4L (marked with orange-white circle): 2 screws






13. Close the CTO box door.



14. Slide the knob to the left to lock the CTO box door.



2ND Smart Card Module Screws

Screw Name	Screw Type	Quantity	Torque
ISOT-M2.0X3L		8 (CTO door plate to lower case)	2.0 ± 0.2 Kgf-cm
ISOT-M2.6X4L		2 (module to lower case)	2.5 ± 0.2 Kgf-cm
M2.6X12L & O RING		6 (module to lower case)	2.5 ± 0.2 Kgf-cm